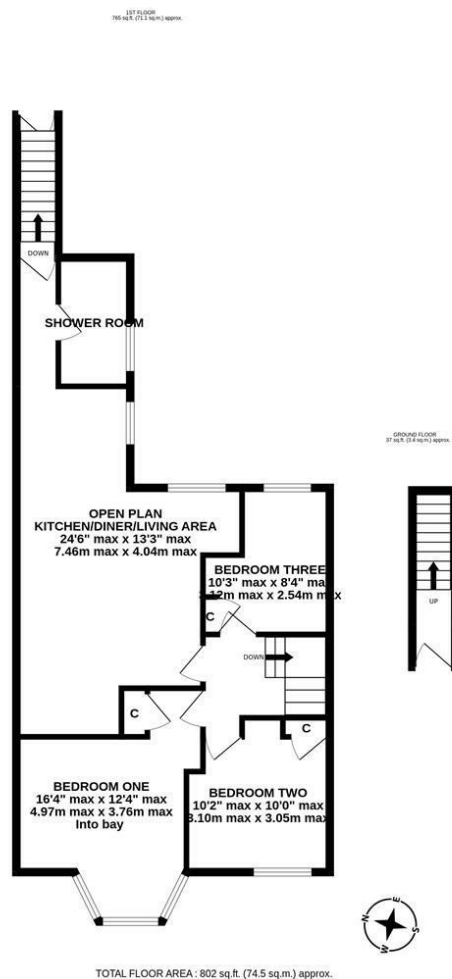




Three Bedroom Upper Floor Flat with No Onward Chain! Situated close to Newcastle City Centre, this three bedroom upper floor flat is ideally located on Chillingham Road, Heaton. Chillingham Road, situated within striking distance to Heaton's cafes, restaurants and transport links into Newcastle City Centre and beyond. The delightful Heaton Park is also a short walk as are the shops and amenities on Heaton Road.

Upper Floor Flat | Three Bedrooms | 802 Sq ft (74.5m²) | 24ft Open Plan Kitchen/Diner & Living Area | Shower Room | Rear Yard | No Onward Chain | Popular Location | Leasehold - Tyneside Lease with Peppercorn Rent - 984 Years Remaining | Council Tax Band A | EPC: C



TOTAL FLOOR AREA : 802 sq.ft. (74.5 sq.m.) approx.

Whilst every attempt has been made to ensure the accuracy of the floorplan contained here, measurements of doors, windows, rooms and any other items are approximate and no responsibility is taken for any error, omission or mis-statement. This plan is for illustrative purposes only and should be used as such by any prospective purchaser. The services, systems and appliances shown have not been tested and no guarantee as to their operability or efficiency can be given.
Made with Metacaxi ©2025

Offers Over £160,000

IMPORTANT NOTE: These particulars and the descriptions and measurements herein do not constitute representation and whilst every effort has been made to ensure accuracy, this cannot be guaranteed.

